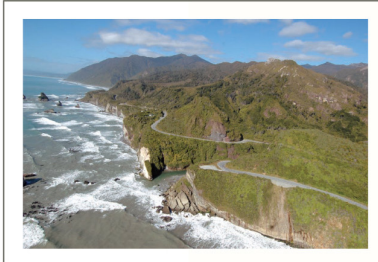




PUNAKAIKI
RESORT



www.punakaiki-resort.co.nz
State Highway 6, Punakaiki (03)7311168



Contents

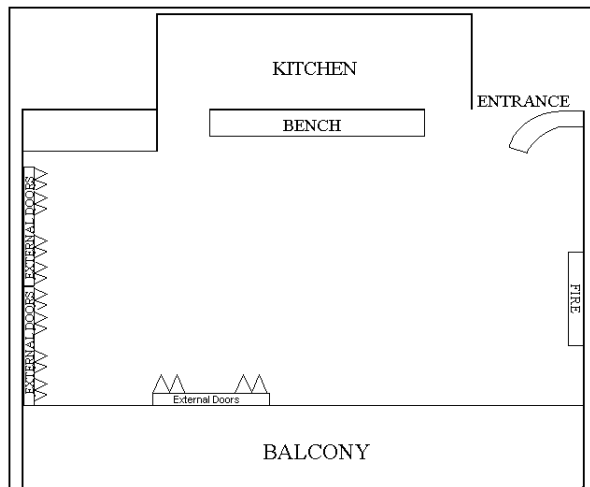
	Page
Conference Venue and Capacity (with floor plan)	3
Daily Delegate Package	5
Conference Catering	6
Breakfast	
Working Lunch Menu	
Dinner Menu	
Canapés Menu	
Beverage Selector	
Accommodation	13
Leisure Activities	16

Conference Venue

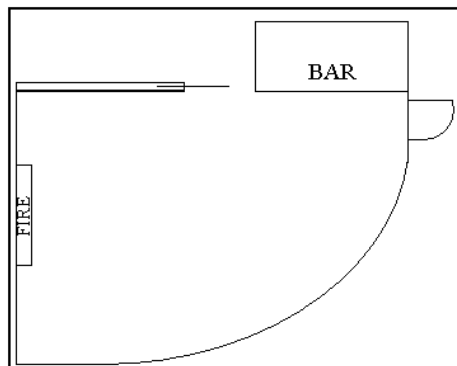
Punakaiki Resort offers a unique conference venue for your next corporate function. The Resort's superior service and stunning location will ensure that your next conference or corporate meeting is productive and unforgettable for your delegates.

The Resort features two conference venues:

Waterline Restaurant



Waterline Bar



Venue Capacity

	Theatre	Classroom	U Shaped	Boardroom	Cocktail
Waterline Bar	50	30	30	20	60
Waterline Restaurant	80	60	90	-	110

Let us prepare a quote for you...

Consult with the Resort's Functions Manager and allow us to tailor a quote that is specific to your needs and requirements.

Prices quoted are subject to alteration due to circumstances beyond our control although, every effort is made to honour the quoted price.

Payment of Accounts

To ensure the venue is available for your occasion, we will require a non-refundable deposit within 1 month of receiving your quote. We will confirm receipt of your deposit. The balance and food cost (based on final numbers) is to be settled on the day of departure.

Management Fee

Included in our quote is a management fee. The management fee includes venue hire, tea and coffee on arrival, chilled water and mints, pads and pens, AV equipment including; viewing screen; whiteboard; OHP, initial room set up and the co-ordination of the event by our experienced Functions Manager.

Waterline Restaurant or Bar

	Half day	Full day
with catering	\$75.00	\$150.00
without catering	\$150.00	\$300.00

Exclusive hire of entire Resort - \$9000per night
(including 61 rooms, Waterline Restaurant and Bar venue)

Subject to availability. 30% non-refundable deposit required. All prices are GST inclusive.

Daily Delegate Packages

Nikau Package

Minimum of 10 delegates

Includes: Venue Hire of either Waterline Restaurant or Bar

Arrival tea and coffee

Mints, pens and writing pads

AV equipment

Morning tea- The Paparua (refer to page 6)

Lunch - The Tasman (refer to page 7)

Afternoon tea- The Paparua (refer to page 6)

\$55.00 (GST inclusive) per person (hire of Waterline Bar)

\$60.00 (GST inclusive) per person (hire of Waterline Restaurant)

Truman Package

Minimum of 10 delegates

Includes: Venue Hire of either Waterline Restaurant or Bar

Arrival tea and coffee

Mints, pens and writing pads

AV equipment

Morning tea- The Rocks (refer page 6)

Lunch- The Pororari (refer page 7)

Afternoon tea- The Rocks (refer page 6)

\$65.00 (GST inclusive) per person (hire of Waterline Bar)

\$70.00 (GST inclusive) per person (hire of Waterline Restaurant)

Conference Catering

To ensure planning for your conference is stress-free, simply choose the catering options that you would prefer from below (venue hire not included) or alternatively, choose from our Daily Delegate Packages (refer to page 4).

Breakfast Menu

Continental Breakfast	\$18.00 per person
Cooked Buffet Breakfast	\$23.00 per person

Catering Breaks

The Paparua	\$12.50 per person
Fresh baked muffins or croissants and danish pastries	
Coffee and tea	
Orange juice	

The Rocks	\$18.00 per person
Fresh baked muffins	
Croissants and Danish pastries	
Fruit platter	
Coffee and tea	
Orange juice	

The Ranges	\$19.70 per person
Fresh baked muffins	
Danish pastries	
Filled savory croissants	
Fruit platter	
Coffee, tea and chocolates	
Orange juice	

Working Lunch

The Tasman \$22.50 per person

A selection of cold ciabatta sandwiches
Passion fruit Cheesecake
Fresh baked muffins or scones
Coffee and tea
Fruit juice

The Pororari \$29.00 per person

Make your selection from the dishes featured below.

Select: One Cold Sandwich
One Hot Option
One Salad
One Dessert

The Charlestown \$33.00 per person

Make your selection from the dishes featured below.

Select : One Cold Sandwich
Two Hot Options
Two Salads
One Dessert

Cold Sandwiches

Chicken and brie ciabatta sandwich
Roast beef ciabatta sandwich
Mediterranean roast vegetable ciabatta sandwich

Hot Dishes

Vegetarian Quiche
Bacon and Brie Quiche
Crumbed Fish
Asian beef stirfry with udon noodles

Salad

Fresh garden salad
Pasta salad w feta, sundried tomato, fresh herbs and a balsamic vinaigrette
Homestyle potato salad with gourmet potatoes, bacon, red onion and an aioli dressing

Dessert

Chocolate mudcake
Passionfruit Cheesecake
Carrot Cake
All desserts served with chocolate sauce, berry coulis and freshly whipped cream

Dinner Menu

Buffet Dinner

Option One- \$47.25 per person

- Roast lamb or beef served with roast potatoes, accompanied with sauce
- Seasonal white fish fillets baked with lemon, olive oil and fresh herbs
- Roast honey mustard chicken drum sticks with rice
- Fresh garden salad with Waterline house dressing
- Orzo pasta salad with sundried tomato, feta and dressed by balsamic vinaigrette
- Warm bread rolls

- Passionfruit Cheesecake
- Pavlova served with berry compote and freshly whipped cream
- Chocolate mud cake served with berry coulis

Option Two- \$55.00 per person

- Whole roast sirloin sliced and served with roast potatoes
 - Poached side of fresh salmon served in a garlic cream sauce
 - Oven baked chicken in a rich mushroom sauce
 - Orzo pasta salad with roast mushroom, spinach and pesto dressing
 - Greek salad with tomatoes, capsicum, cucumber, red onion topped with olives and feta cheese
 - Warm bread rolls

 - Passionfruit Cheesecake
 - Pavlova served with poached berries and freshly whipped cream
 - Chocolate mudcake served with berry coulis
- For a carvery option please add \$3.00 per person*

Set Menu

Option One- \$50.60 per person

Select Two Entrées, Three Mains, Two Desserts

Entrée

- Creamy Waterline Seafood Chowder accompanied by fresh bread roll
- Chicken Salad
- Roast Mediterranean vegetable bruschetta with crumbled feta and olive oil
- Roast Pumpkin Tart topped with sundried tomatoes, caramelized onions & blue vein cheese

Main

- Ribeye steak served with roast potatoes and finished with a red wine jus
 - Chicken breast served with roast potatoes and a mushroom and capsicum sauce
 - White fish with rice with a white wine cream sauce
 - Roast lamb with roast potatoes and red wine jus-lie
- All mains served with roast potatoes and steamed vegetables*

Dessert

- Chocolate mud cake with berry coulis and vanilla ice cream
- Pavlova with berry compote and whipped cream
- Waterline Sundae with berry compote
- Apricot Tart

Option Two- \$61.90 per person

Select Two Entrées, Three Mains, Two Desserts

Entrée

- Soup of the day accompanied with a fresh bread roll
- Waterline risotto with seasonal fresh seafood
- Greek salad of tomato, olives, red onion, cucumber, capsicum and feta
- Lamb salad with Mediterranean style yoghurt dressing

Main

- Ribeye steak with roast potato served with a red wine juslie sauce
 - Chicken breast served on roast potatoes with a mushroom and capsicum sauce
 - Salmon fillet on rice accompanied with sautéed asparagus** or bok choy** and citrus hollandaise
 - Roast Mediterranean vegetable tart with a mesculin and almond salad
- All mains served with roast potatoes and steamed vegetables*

Option Two continued...

Dessert

- Traditional chocolate mousse
 - Chefs special cheesecake accompanied with berry coulis
 - Traditional crème brulee
 - Traditional apple shortcake
- **Asparagus or bok choy is dependant on what is in season

Canapés Menu

Option A:	\$16.90 per person
Selection of 4 (two hot, two cold dishes)	
Option B:	\$20.25 per person
Selection of 6 (three hot, three cold dishes)	
Option C:	\$23.60 per person
Selection of 8 (four hot, four cold dishes)	

Hot Options

- Spicy Meatballs
- Mini Spring Rolls
- Samosa's
- Sweet Chili Chicken Tenders
- Corn Fritters
- Crumbed Mussels
- Voulevants with a selection of seafood, chicken and bacon & mushroom
- Prawn Twists
- Seasonal Whitebait Fritters

Cold Options

- Seared beef on bruschetta
- Smoked salmon on bruschetta
- Sushi Selection
- Mixed blinis- salmon, beef, cream cheese & chive, sundried tomato & feta
- Bruschetta with a selection of pesto's
- Mini open sandwiches
- Vegetable platter

These menus are subject to change due to seasonality, availability and product cost. All prices are GST inclusive.

Beverage Selection

Hosted bars are charged on a consumption basis so that you pay only for what your delegates consume. Please make your selection from the following.

Limited Bar

Standard beer, house wines, orange juice, soft drinks, mineral water

Standard Bar

Standard beer, house wines or wines of your choice, orange juice, soft drinks, mineral water and house spirits

Full Bar

All beverages listed below including wines of your choice

Beverage List

Non Alcoholic

Ginger Beer	\$4.00
Sparkling Grape Juice, Coke, Diet Coke,	\$3.50
Lemonade, Soda Water, Ginger Ale, Tonic Water	\$3.50
Brightstone Cider	\$7.00
Fruit Juice	\$4.00

Beer

Light Beer	\$5.00
Standard Beer	\$5.00
Premium Beer	\$7.00
Tap Beer 12'	\$5.00

House Spirits

Double (30ml)	\$7.00
Single (15ml)	\$4.00

Doubles served unless otherwise requested

Premium Spirits

Double (30ml)	\$9.50
Single (15ml)	\$5.50

Doubles served unless otherwise requested

Liqueurs (30ml)	\$7.50
Port (45ml)	\$7.50
Sherry (45ml)	\$7.50

Wine List

Please note that this wine list is subject to change and should be used as a guide only.

Merlot/Blends/Syrah	Bottle
Bensen Block Merlot <i>Hawkes Bay, NZ</i>	\$35.00
Main Divide Merlot Cabernet <i>Marlborough, NZ</i>	\$45.00
Te Mata 'Woodthorpe' Merlot Cabernet <i>Hawkes Bay, NZ</i>	\$49.00
Boundary 'Lake Road' Syrah <i>Hawkes Bay, NZ</i>	\$45.00
Corbans 'Private Bin' Syrah <i>Hawkes Bay, NZ</i>	\$49.00
Pinot Noir	
Mount Riley <i>Marlborough, NZ</i>	\$45.00
Kahurangi Estate <i>Nelson, NZ</i>	\$49.00
Boundary 'Kings Road' <i>Waipara, NZ</i>	\$50.00
Forrest Estate <i>Marlborough, NZ</i>	\$55.00
Black Estate <i>Waipara, NZ</i>	\$59.00
Champagne/Methode Traditional	
Verde NZ <i>Hawkes Bay, NZ</i>	\$35.00
Deutz Brut <i>Marlborough, NZ</i>	750ml Bottle \$49.00
Bollinger Special Cuvee N.V, <i>France</i>	\$115.00
Sauvignon Blanc	
Bensen Block <i>Marlborough, NZ</i>	\$35.00
Heart of Stone <i>Marlborough, NZ</i>	\$35.00
Mount Riley <i>Marlborough, NZ</i>	\$37.00
Forrest Estate <i>Marlborough, NZ</i>	\$40.00
Clayridge <i>Marlborough, NZ</i>	\$45.00
Te Mata 'Woodthorpe' <i>Hawkes Bay, NZ</i>	\$45.00
Chardonnay	
Bensen Block Unoaked <i>Gisborne, NZ</i>	\$35.00
Belmonte <i>Marlborough, NZ</i>	\$35.00
Allan Scott <i>Marlborough, NZ</i>	\$40.00
Forrest Estate <i>Marlborough, NZ</i>	\$49.00
Black Estate <i>Waipara, NZ</i>	\$59.00
Aromatics	
Bensen Block Pinot Gris <i>Gisborne, NZ</i>	\$35.00
Allan Scott Pinot Gris <i>Marlborough, NZ</i>	\$35.00
Boundary 'Paper Lane' Pinot Gris <i>Waipara, NZ</i>	\$40.00
Milcrest Estate Pinot Gris <i>Nelson, NZ</i>	\$45.00
Kahurangi Estate Mt Arthur Reserve Riesling <i>Nelson, NZ</i>	\$40.00
Forrest Estate Riesling <i>Marlborough, NZ</i>	\$40.00
Huntaway Reserve Gewurztraminer <i>Gisborne, NZ</i>	\$45.00

Accommodation

For your delegates, Punakaiki Resort offers a range of accommodation options from which to choose. You may make a selection from our Standard Resort Rooms or Eco-Suites. Please consult with your conference organiser to arrange accommodation. Outlined below, you will find our accommodation rate offered exclusively for your conference.

The rooms are designed in harmony with the local environment and have either ocean or rainforest views. All rooms are staggered to maintain a sense of privacy and seclusion.

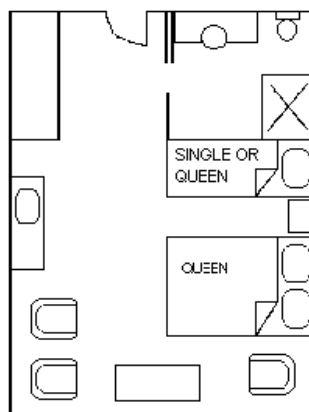
Standard Resort Rooms

Spacious, modern studio units with ensuite and rainforest and/or ocean views. The Resort has 49 Standard rooms.

Each room features:

- SKY TV
- Tea and coffee facilities
- Complimentary EcoEssential Toiletries Deluxe Mini bar
- Radio Alarm Clock
- Two queen beds or a queen and a single bed
- Iron and ironing board
- Hairdryer
- Wireless internet
- Refrigerator
- Non-smoking
- Suites feature kitchenette facilities

Standard Resort Room



Eco-Suites

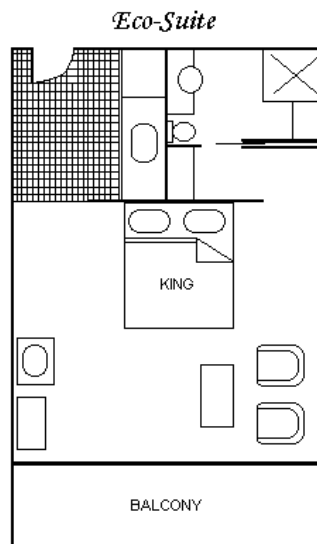
Slightly more spacious than our Standard Resort Rooms, these 12 luxury suites are eco-friendly with ocean and/or rainforest views. The suites have been designed and built to have minimal impact on the environment.

The materials used include:

- Only organically grown timbers
- Commercial materials with little or no toxins.
- Large solar panels
- Ecofleece insulation
- Thermocell panels located in the ceilings promoting energy efficiency.
- The units were designed and built around the larger native trees and smaller plants were relocated to other areas of the resort.
- Environmentally friendly amenities
- Energy saving devices

In addition to the Standard room features, the Eco-Suites feature:

- Fully equipped kitchenette including; microwave oven, refrigerator and a cook top available on request.
- King bed
- Ensuite bathroom and luxury waffle bathrobes
- Complimentary Evolu Toiletries
- Late checkout of 11am.



Rates

	1 st May- 30 th September	1 st October- 30 th April
Standard Hotel Room-	\$140	\$210
Eco-Suites-	\$190	\$260

More competitive rates may be available depending on the time of year, availability and guest numbers. Rates are applicable from August 2007-August 2008.

Leisure Activities

The Punakaiki area has numerous activities to entertain your conference attendees. Talk to your conference organiser for more information.

Planned Activities

1-2 hours

Quad Biking

Located only 25 minutes from the Resort, Quad Biking offers a fun activity for up to 2 hours. No experience is necessary. Transport is available from the Resort.

Caving

Guided caving trips are available from the Resort for up to 20 delegates.

Monteith's Brewing Company, Greymouth

Experience the true taste of the West Coast, brewed locally in Greymouth. Monteith's Brewery has been making great beer since 1868. Our steaming coal-fired boilers and open fermenters show you how some of the best beers in the world are brewed, with over 7 beers on tap you will get a strong appreciation of what makes Monteith's New Zealand's leading craft beer range.

Tours: 11:30am, 2pm, 4pm, 6pm and 7pm.

Half day Trips

Guided walks are available for up to 8 hours.

Shantytown "Goldstrike Tour"

One of New Zealand's premier cultural and heritage attractions, this is a recreated 1900's pioneer town. This tour includes transport to Shantytown, entry into Shantytown, steam train ride and goldpanning - with gold guaranteed! Allow 3-4 hours.

Heritage Tour

This is a unique conference activity for your colleagues. This tour starts at the Resort and includes a trip to the tragic Brunner Mine Site, a visit to the infamous "Formerly Blackball Hilton" hotel and the Blackball Salami Co. and the Monteiths Brewery tour in Greymouth, finishing at the Waterline Bar at the Resort.

Day Trips

Helicopter trips are available to Franz Josef and Fox Glaciers.

Golf

There are two golf courses located within 40 minutes of Punakaiki Resort. Transport from the Resort is available.

- Greymouth is a par 72 course located on Rochford Road, Kaiata. The course is rarely crowded and surrounded by native bush.
- Westport golf course is located on Marine Parade at Carter's Beach. This course is a par 72.

Unplanned Activities

30mins – 2hours

Pancake Rocks and Blowholes

Located 300metres north of the Resort, this walk can take anywhere from half an hour to complete. Particularly spectacular at high tide, your guests will love viewing this amazing phenomenon.

Walking Tracks

The Paparoa National Park has numerous walking tracks lasting from half an hour to several days. We would recommend the Truman Track. This walk takes approximately 45minutes for a return trip but you may like to take your time and experience the incredible views of the Southern Alps and a blowhole. At low tide it is possible to explore the several caves on the beach. This walk is only 3.4km north of Punakaiki Resort.

Punakaiki Cavern

This cavern is located to the right of State Highway 6 as you walk into Punakaiki Village.

Kayaking

This is a great way to spend time with your attendees. Only two minutes from the Resort in Punakaiki Village, you can kayak up the Pororari River and view the spectacular scenery of the Paparoa National Park.